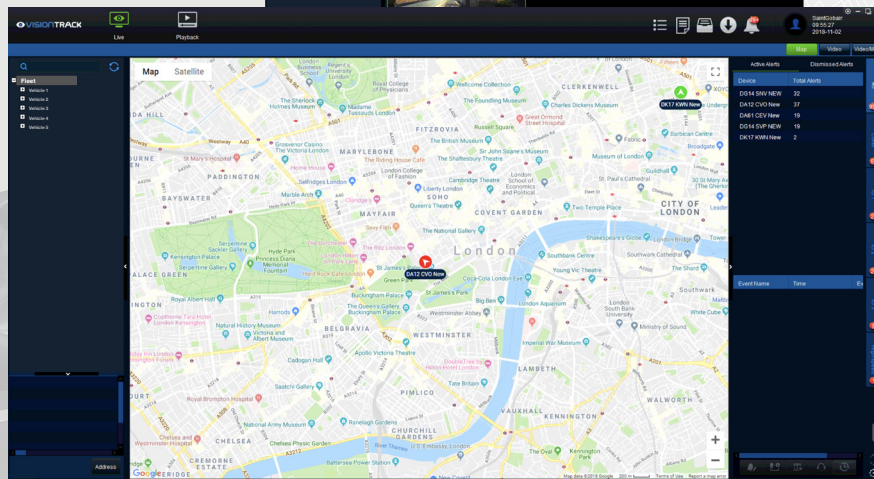
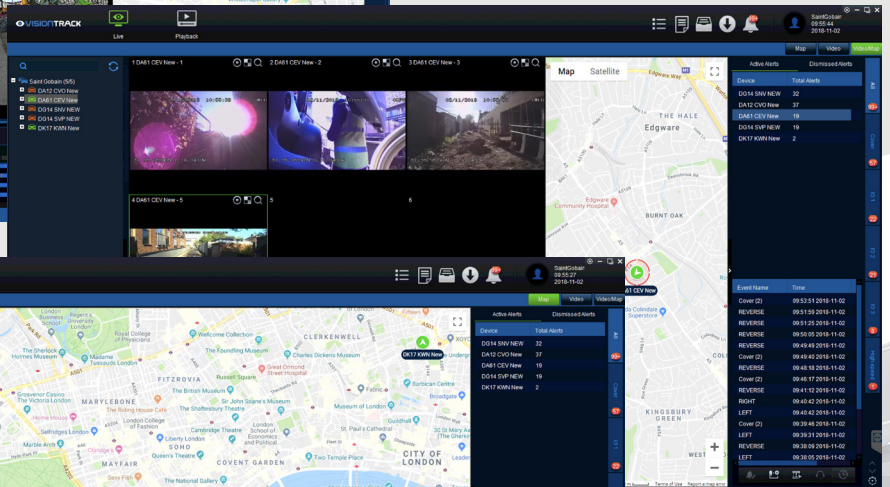
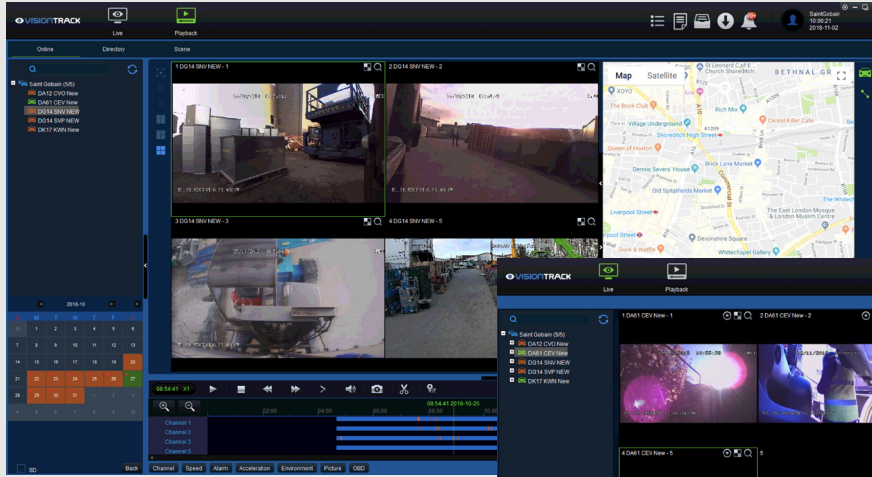


# VISIONTRACK

## MULTI CHANNEL SOFTWARE GUIDE



THE UK'S MOST  
AWARD-WINNING  
CAMERA TELEMATICS  
COMPANY

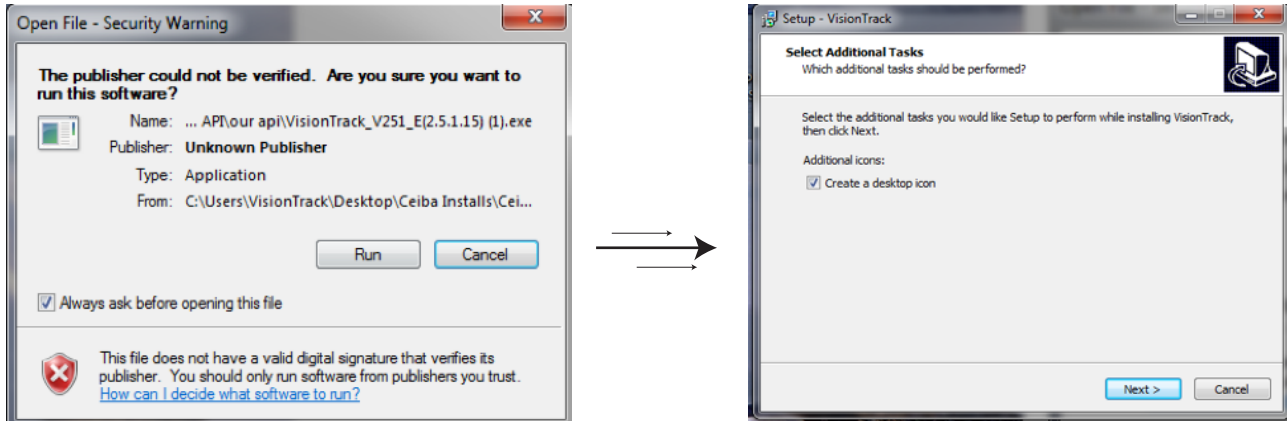


# TABLE OF CONTENTS

Installation	3
Logging In	4
Live View	5
Vehicle Status	7
Map View	8
Playback	9
Exporting	11
Reports	12
Settings	13

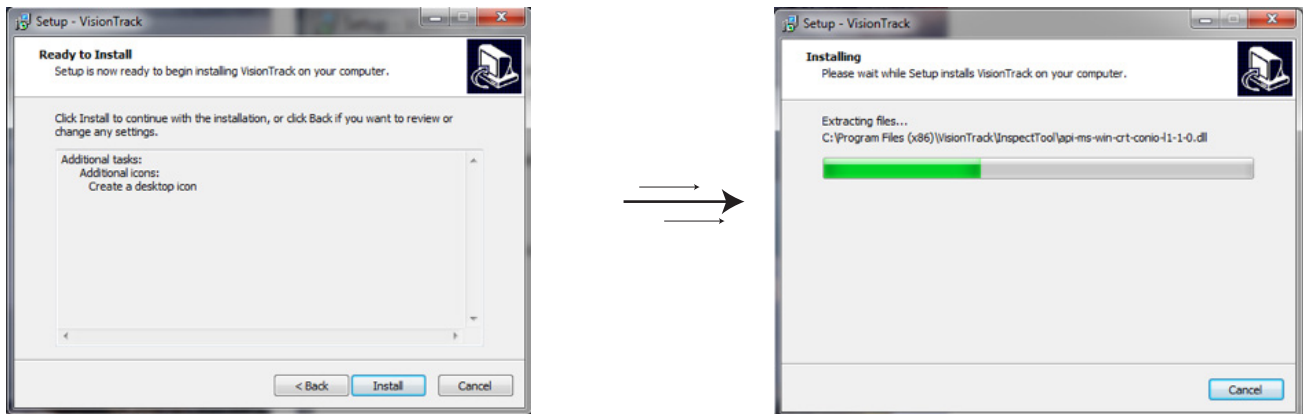
## INSTALLATION

1. Open the .exe file received from VisionTrack. Once opened, click 'Run' which will continue to the next stage of the installation process.

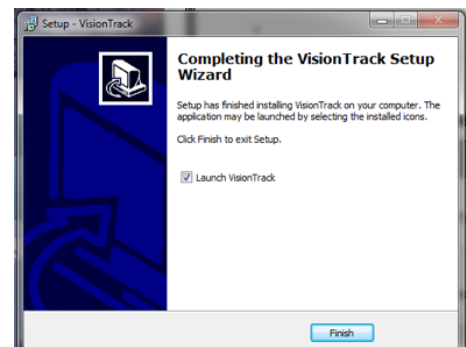


2. Once the 'Setup' window appears, you can choose whether to create a desktop icon. This will allow you to access the program quicker. Once decided, click 'next' to continue to the next stage.

3. Click 'Install' once confirmed reviewed set-up.



4. Click Finish to start using VisionTrack's Multi-channel software.



## LOGGING INTO CEIBA

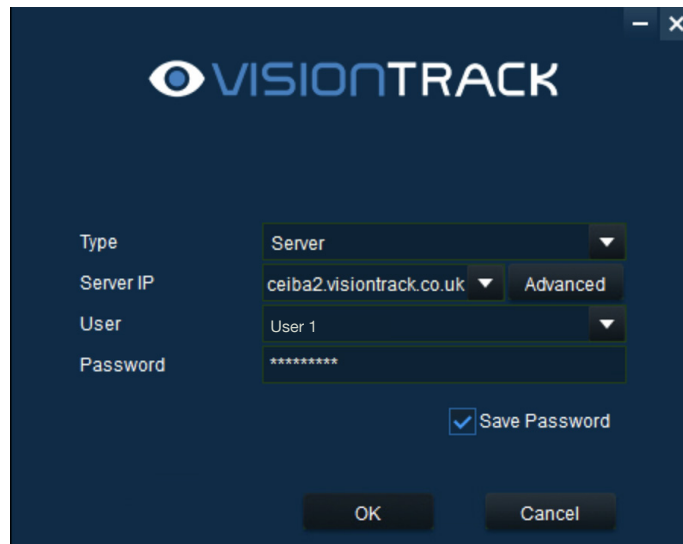
1. Please log into the Multi-channel Software using the credentials provided by VisionTrack.

Example:

**Username:** Company Name

**Password:** VTrack100618

2. Server IP will be [ceiba2.visiontrack.co.uk](http://ceiba2.visiontrack.co.uk) unless specified otherwise.

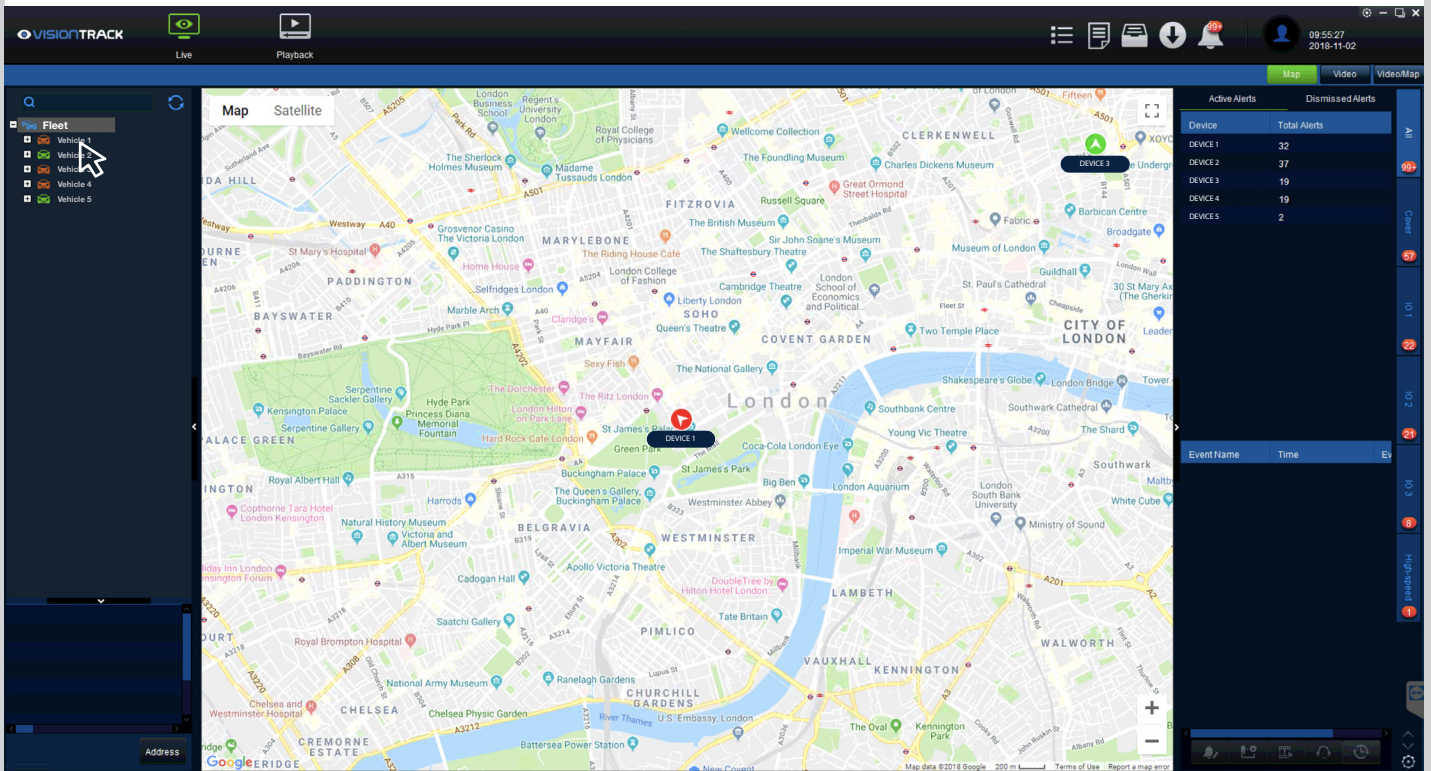


The screenshot shows a dark blue login dialog box with the VisionTrack logo at the top. It contains the following fields and options:

- Type: Server (dropdown menu)
- Server IP: ceiba2.visiontrack.co.uk (dropdown menu) with an "Advanced" button to its right
- User: User 1 (dropdown menu)
- Password: \*\*\*\*\* (password field)
- Save Password (checkbox)
- OK (button)
- Cancel (button)

## LIVE VIEW

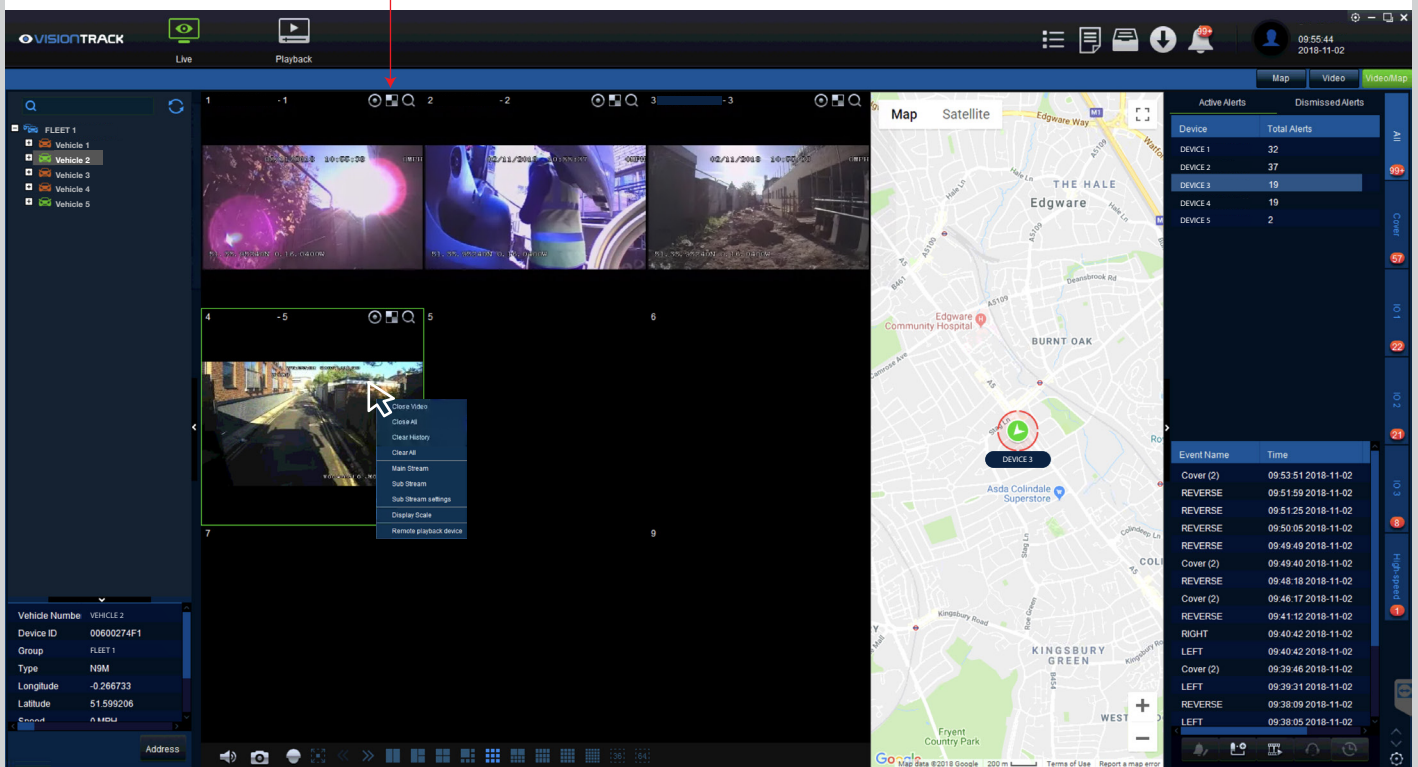
The 'Live View' page is the home of the software, here you can access all live data for your fleet. This page allows you to stream live footage and see active alerts from selected vehicles.



**Fleet List:** Your fleet will appear on the left of the screen. From here you can view live data for vehicles that are live.

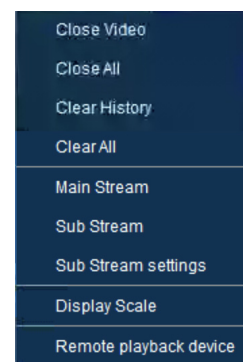
**Selecting a Vehicle:** Double click to select a vehicle and view live data.

# LIVE VIEW



Live View screen will show every channel available for the vehicle selected. Right click a channel to see more options.

- Closes Selected Channel
- Closes All Channels
- Clears Selected Channel Data
- Clears All Channel Data
- Sets Video to Highest Quality
- Sets Video to Lowest Quality
- View Quality Settings
- Aspect Ratio Settings
- Takes you to today's feed from the start



## Tools

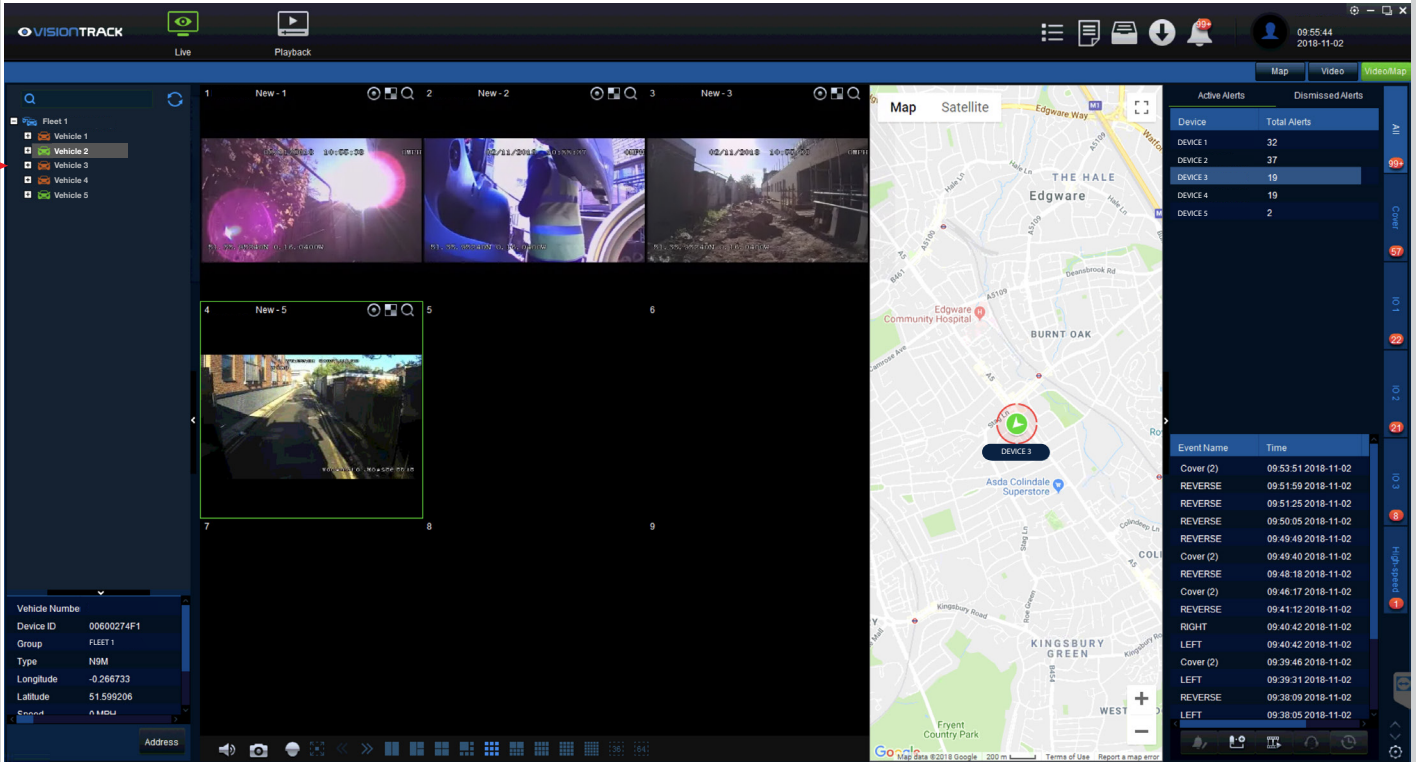
**Record:** Will record the video feed highlighted from the moment you click, downloading directly to your PC. To stop recording, simply click the record button again.

**Blur:** Allows you to blur a selected area (Example you may want to blur out faces/reg plates).




**Zoom:** Highlight an area to zoom in and double click to zoom out.

## VEHICLE STATUS

You can see which vehicles are live using the colour codes below. This shows whether vehicles are driving, not in use, or if the trigger sensors are being set off.

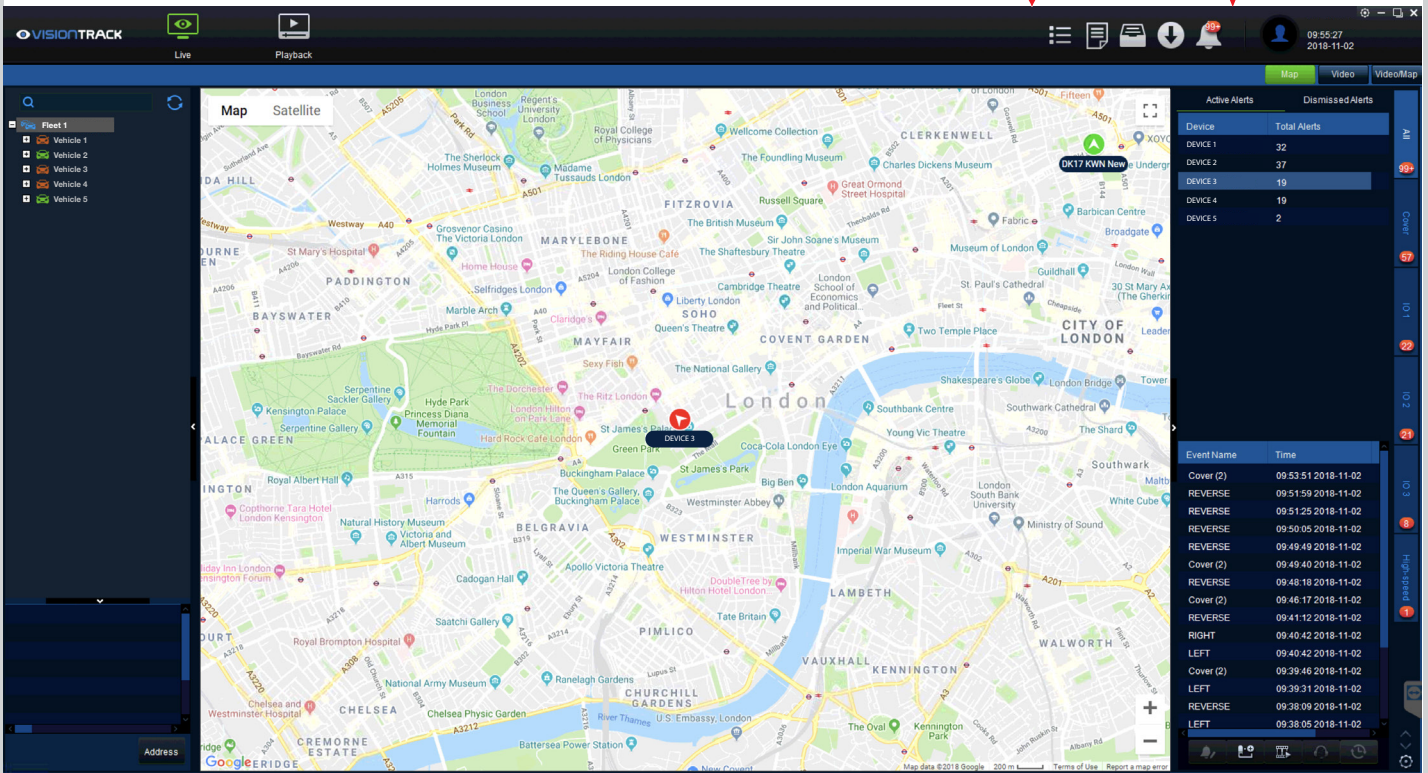


Vehicle Status (colours indicate the current status of the vehicle)

-  Trigger Alert Sensored - (Left/Right Indicator / Door Open & Close / Reverse)
-  Driving (Live)
-  Inactive (Offline)

## LIVE - MAP VIEW




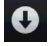
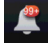
Using the buttons on the right hand side of the screen, you can select which dashboard view you would like to see. Once highlighted, it will show dedicated information. Choosing 'Map' will show the location of the selected vehicle.



Active Alerts - Located on the right-hand side, the active alerts show which current alerts.

### Toolbar Icons

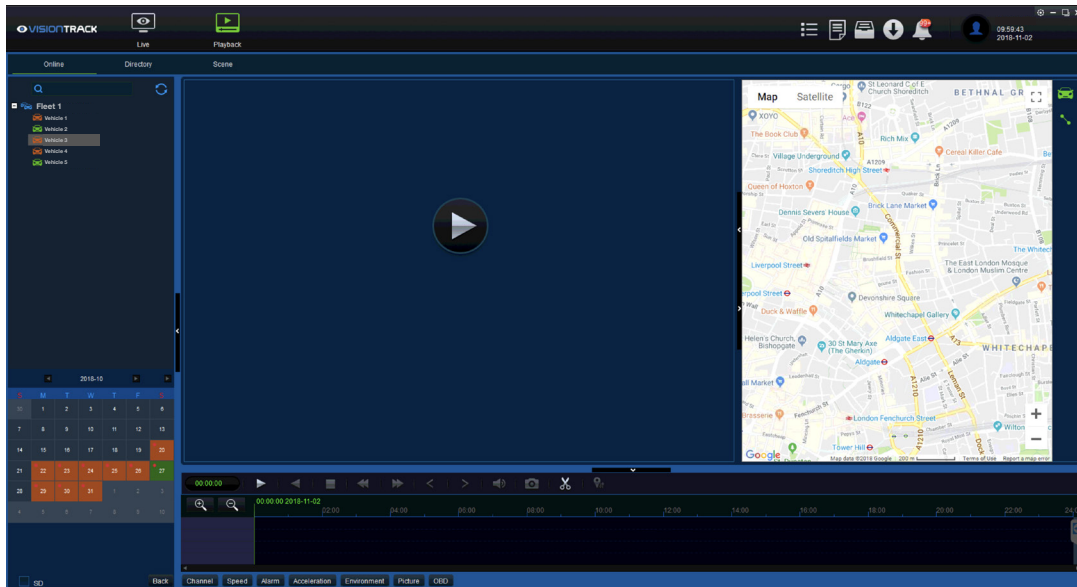
The toolbar icons allow users to access reports, downloads, alarms and general system management.

-  Overview
-  Report Form
-  System Manage
-  Downloads
-  Alarms



## PLAYBACK

**Playback Page:** This page will show playback from selected vehicle/device. This will only be accessible once the vehicle is online with signal.

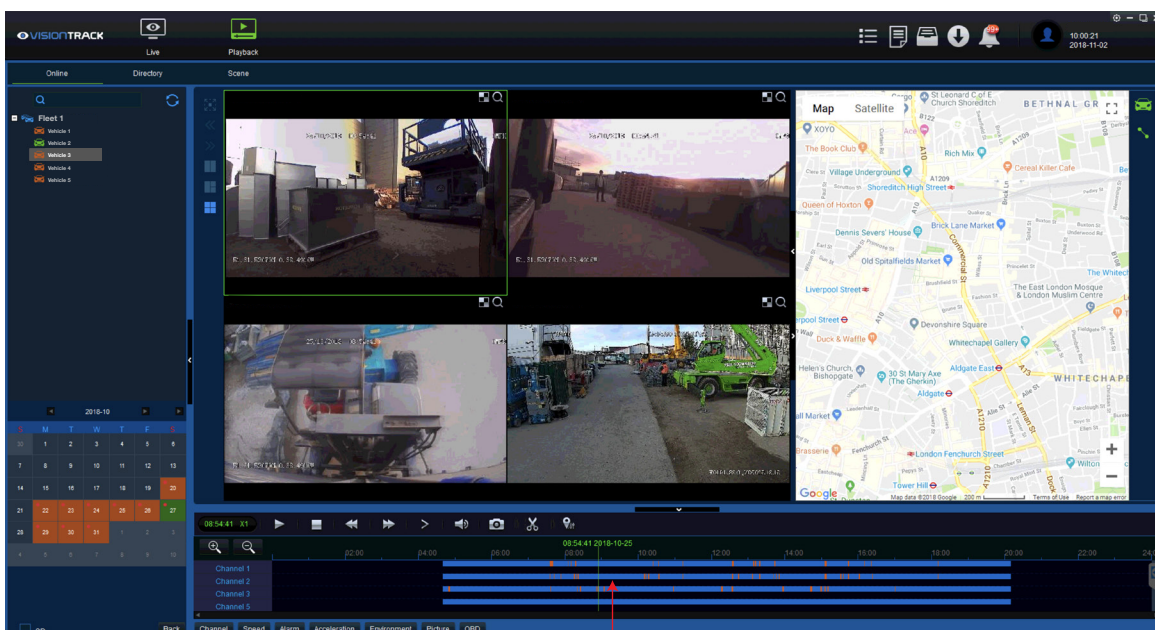


### How to view device playback:

Step 1: Select the vehicle you want to retrieve footage from, using the selection on the left hand-side.

Step 2: Once the vehicle has been selected, the valid dates will appear in orange within the calendar located bottom left of the screen. Double click the date to open.

Step 3: Select channels required and use the timeline to choose which time you'd like to pull footage from.





## PLAYBACK

Once a time and date has been selected you will see the journey appear, 'Blue' showing the journey ahead of the driver and 'Red' showing the route taken.

From here, you can select which part of the journey you'd like to playback using the timeline below.

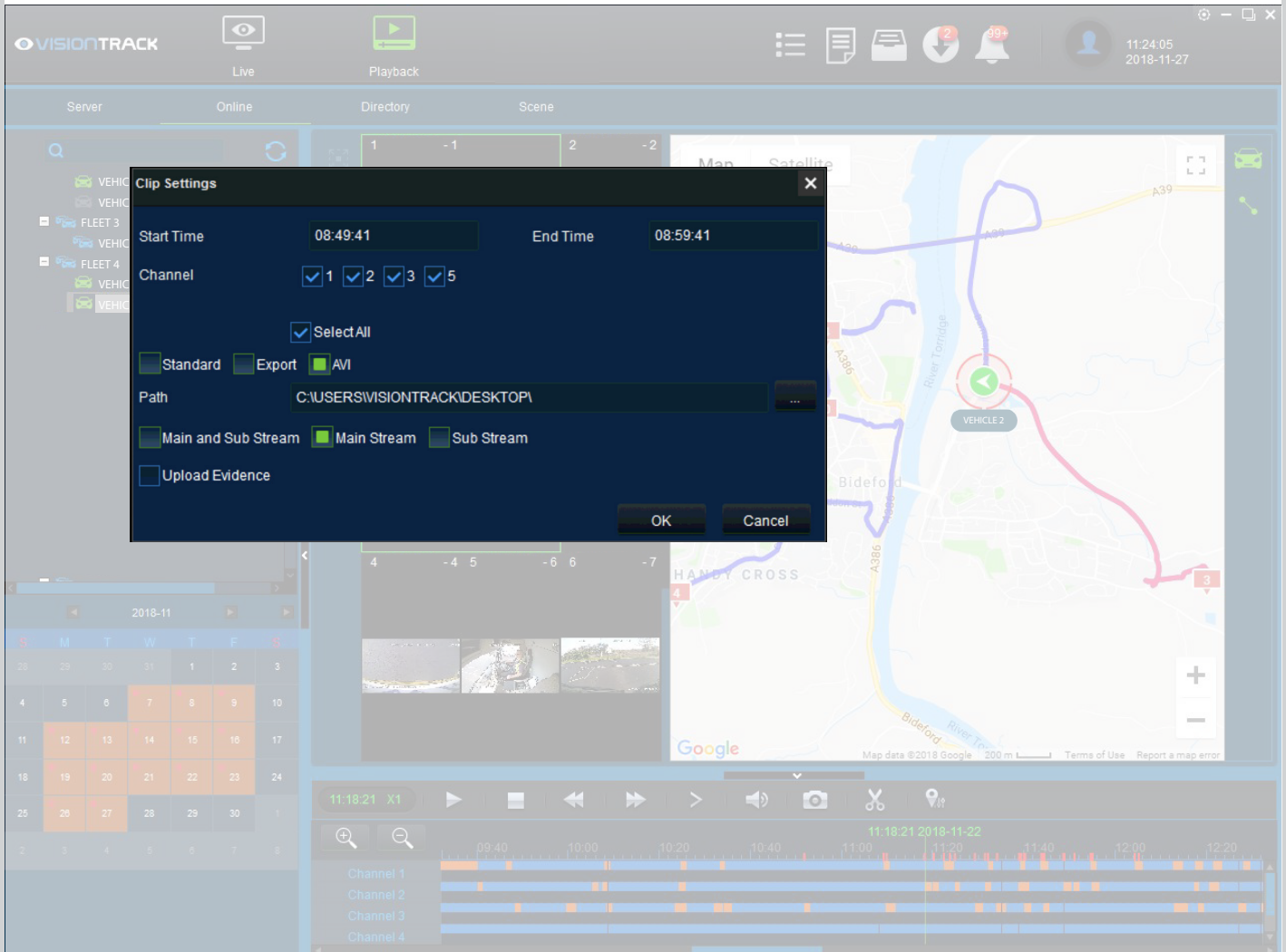
The screenshot displays the VISIONTRACK software interface. At the top, there are navigation buttons for 'Live' and 'Playback', along with a user profile icon and the time '11:24:05 2018-11-27'. Below this is a menu with 'Server', 'Online', 'Directory', and 'Scene'. The main area is divided into several sections: a left sidebar with a search bar and a list of vehicles (VEHICLE 1, VEHICLE 2, FLEET 3, FLEET 4); a central area with a grid of camera feeds (labeled 1-7) and a large map showing a route in blue and red; and a bottom timeline with playback controls (play, stop, previous, next, volume, zoom, location) and a list of channels (Channel 1, Channel 2, Channel 3, Channel 4). A red line points from the text below to a scissors icon on the timeline.

Once you have found the section of clip you'd like to retrieve/playback, use the  icon to download the selected clip.

After the  icon has been clicked three green lines will appear on the timeline with an 'Okay' button will appear in the same area as the scissors. Click 'Okay' and the 'Clip Settings' box will appear. (See next page.)

## EXPORTING

From here you can select which channels to retrieve the footage from, start and finish times and other exporting settings.



Once clicked through, this 'Clip Settings' window will appear, from here you can select which channels to retrieve the footage from, start and finish times and other exporting settings.

**Start Time** = When the clip will record from

**End Time** = When the clip will finish recording

**Channel** = Which channels will be exported

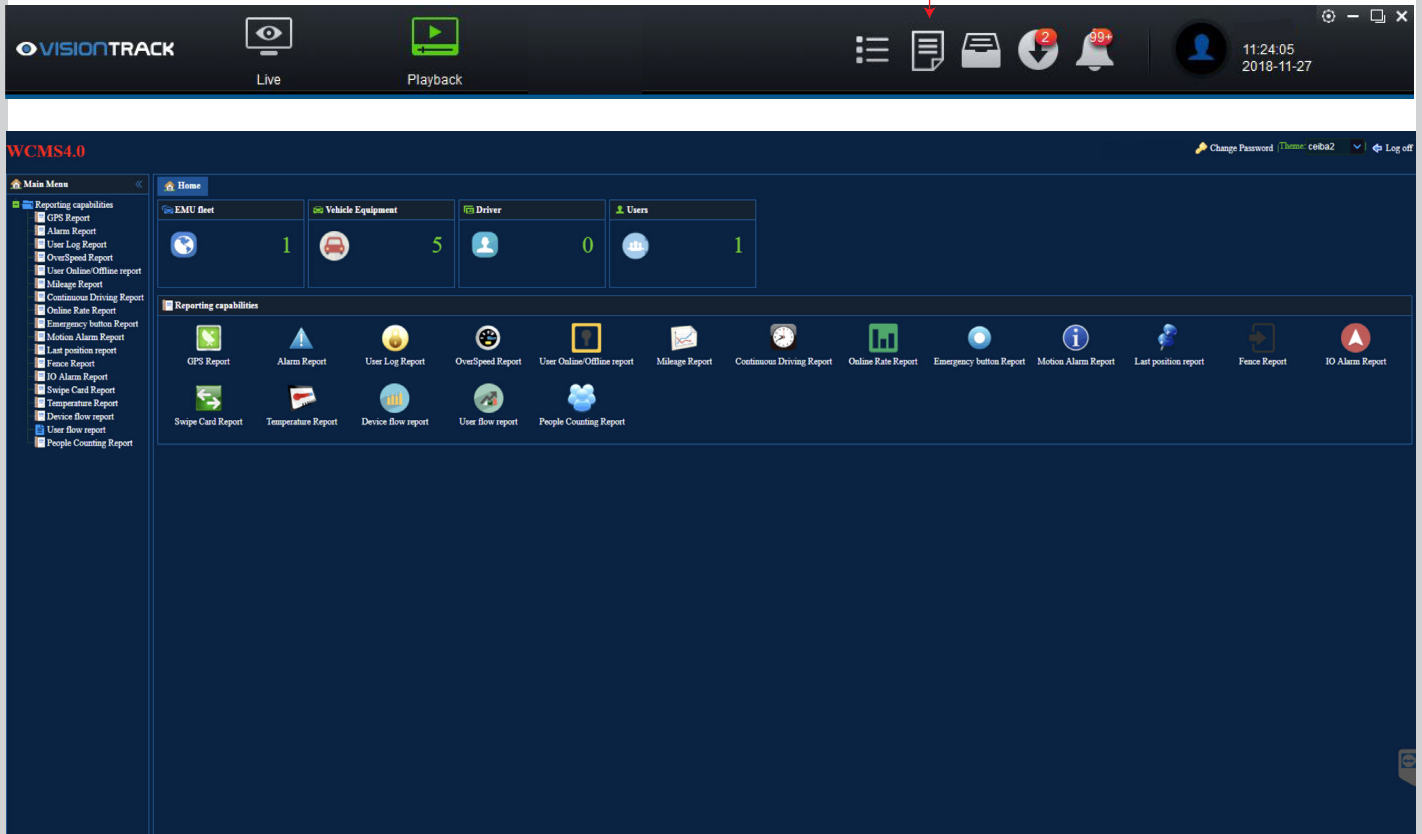
**Exporting File** = Choose AVI to view the footage outside of Ceiba

**Stream Selection** = Choose Main to export

Once these settings have been confirmed, click 'OK' to start exporting (downloads will start in the background, and appear once completed).


## REPORTS

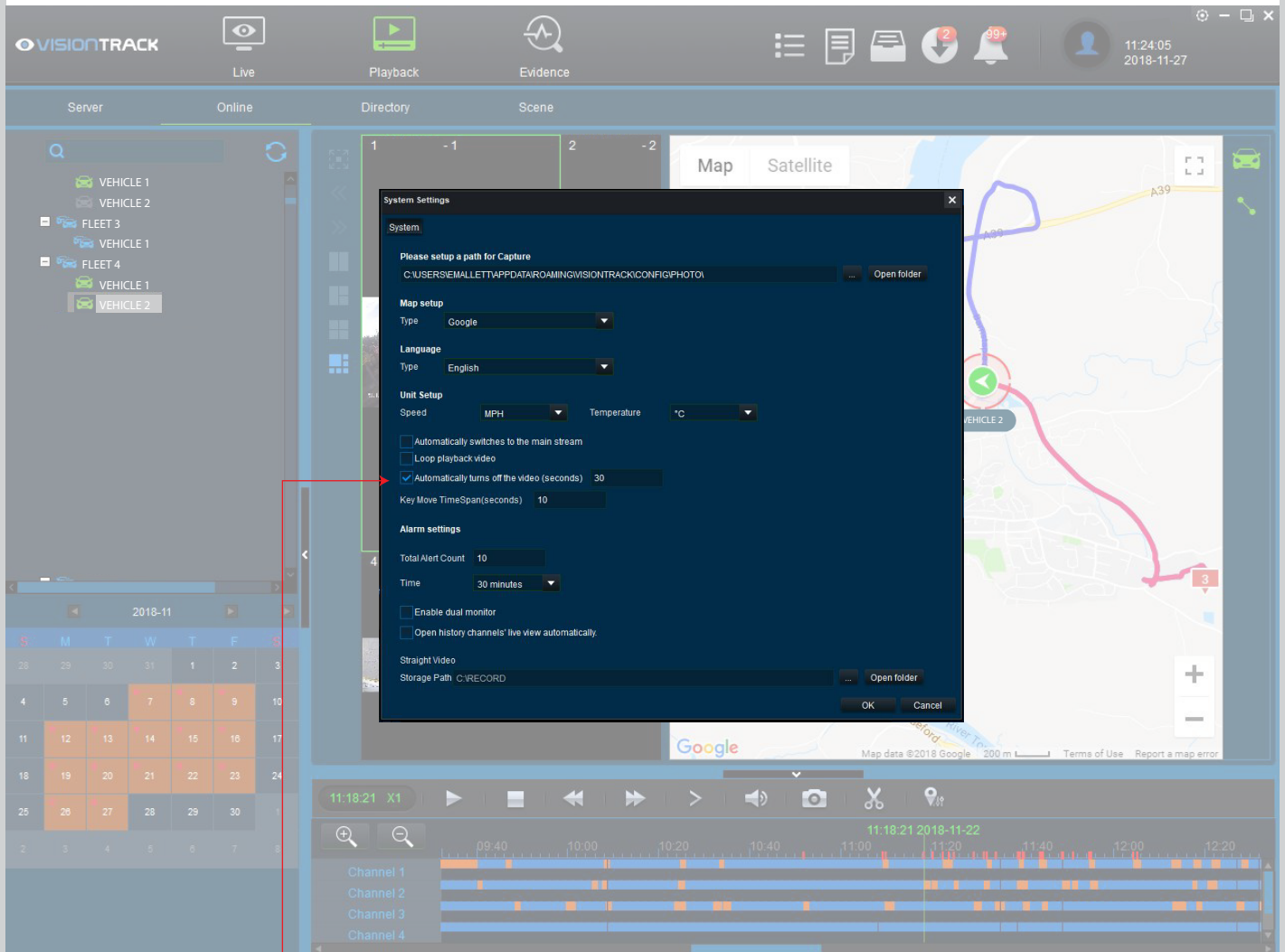
Reports can be accessed via the reports page button. Here you can view the data in a report style layout, available for exporting.



This page allows you to access all reports relevant to your fleet, including mileage, alarm reports, user log and GPS Reports.

## SETTINGS

The settings page is accessible via the  button located top right of the page. From here you can access all settings for your VisionTrack software.



Please ensure this is enabled as it turns off video automatically, stopping accidental over usage which could result in unexpected data overage charges.



 **VISIONTRACK**

SUPPORT CONTACT DETAILS

 01246 223 152

 [ITSupport@visiontrack.com](mailto:ITSupport@visiontrack.com)

[www.visiontrack.com](http://www.visiontrack.com)