

1 2 3 4 5 6 7

A
B
C
D
E
F
G
H

VT3000

DASH CAMERA



High Rooms Industrial Estate
Tunbridge Wells
TN23EF

27/04/2020
05/05/2020
DRAWN
ISSUED

Rev.	Document	Designer	AK
A	VT3000270420		AK
VT3000 - DASH CAMERA		www.VisionTrack.com	N/A
Page	FRONT PAGE		Scale
1 / 10			

OPTIONS	PART	PAGE	REV	NOTES	DATE	DRAWN BY	CHECKED BY
SECONDARY GPIO SERIAL CONNECTOR	VT3000-GPIO	8					
ADDITIONAL PANIC BUTTON	VT3000-PANIC BUTTON	6					
ADDITIONAL IPC CAMERA	VT-C26-IPC	5	A	DOCUMENT CREATION	04/05/2020	AK	MR

1 2 3 4 5 6 7



VT3000



S-VT5500-G/VT3000 ANTENNA



VT-C26-IPC
(OPTION)



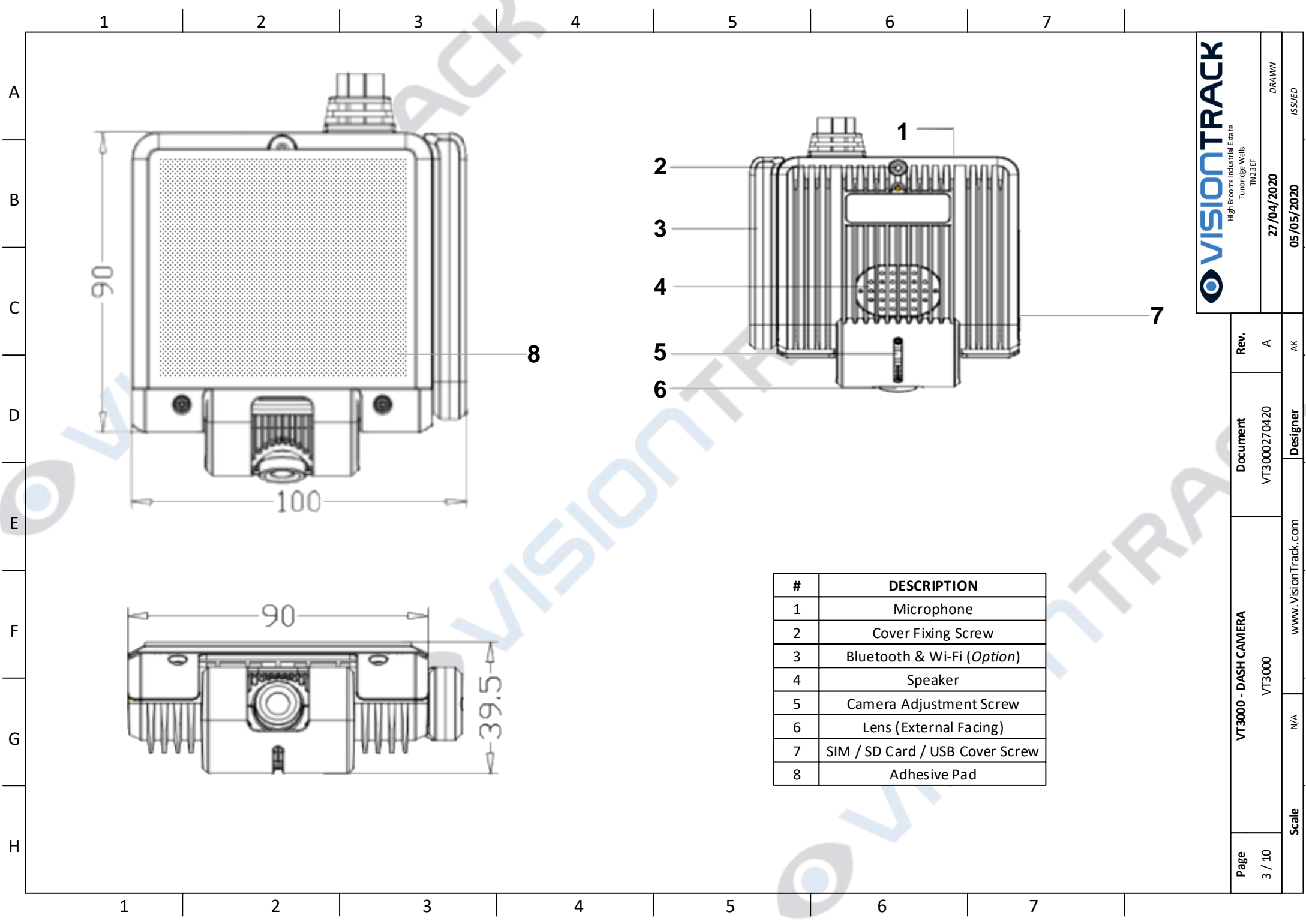
VT3000-PANIC BUTTON
(+1 OPTION)

VISIONTRACK
 High Rooms Industrial Estate
 Tunbridge Wells
 TN23EF

27/04/2020
 05/05/2020

DRAWN
 ISSUED

Page	2 / 10	VT3000 - DASH CAMERA LAYOUT	Rev.	A
Scale	N/A	www.VisionTrack.com	Document	VT3000270420
			Designer	AK



#	DESCRIPTION
1	Microphone
2	Cover Fixing Screw
3	Bluetooth & Wi-Fi (Option)
4	Speaker
5	Camera Adjustment Screw
6	Lens (External Facing)
7	SIM / SD Card / USB Cover Screw
8	Adhesive Pad

VISIONTRACK
 High Rooms Industrial Estate
 Tunbridge Wells
 TN23EF

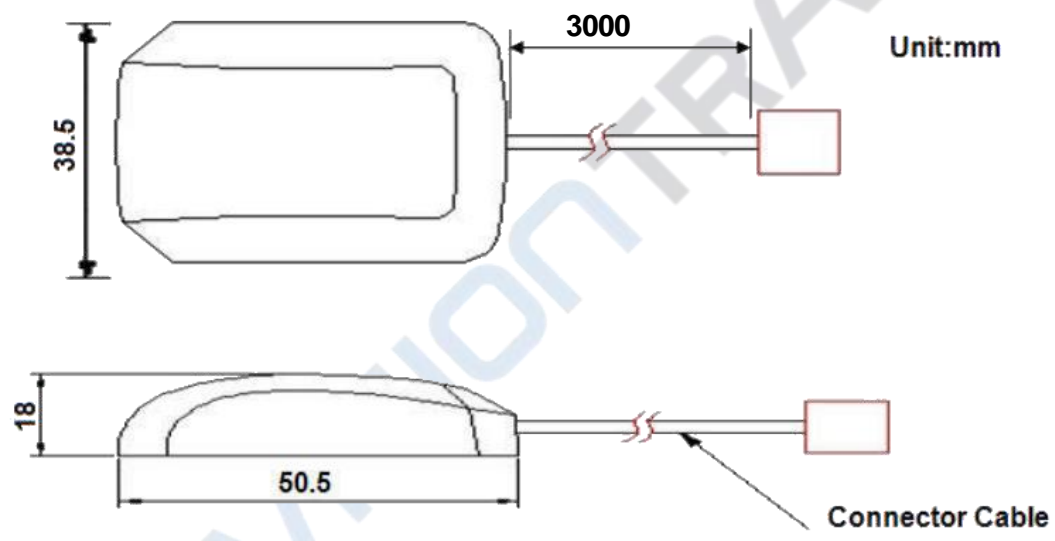
27/04/2020
 05/05/2020

DRAWN
 ISSUED

Rev.	A	AK
Document	VT3000270420	Designer
VT3000 - DASH CAMERA	VT3000	www.VisionTrack.com
Page	3 / 10	Scale
		N/A

1 2 3 4 5 6 7

A
B
C
D
E
F
G
H



High Rooms Industrial Estate
Tunbridge Wells
TN23 3EF

27/04/2020

05/05/2020

DRAWN

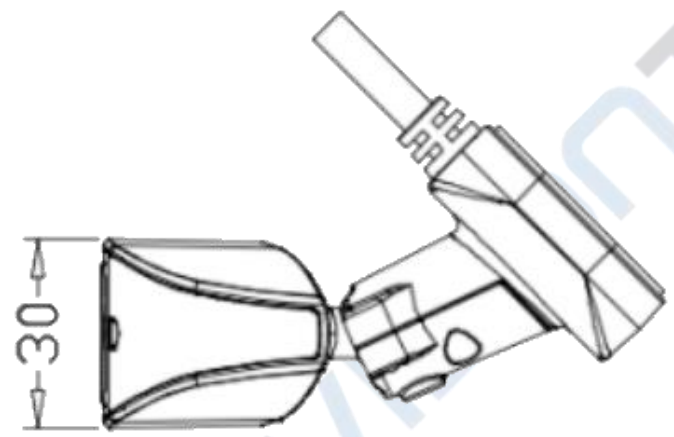
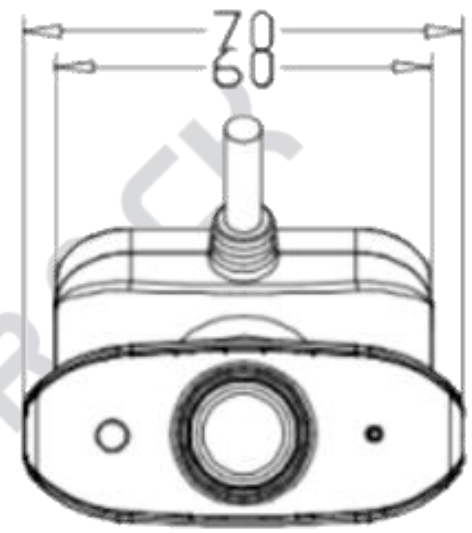
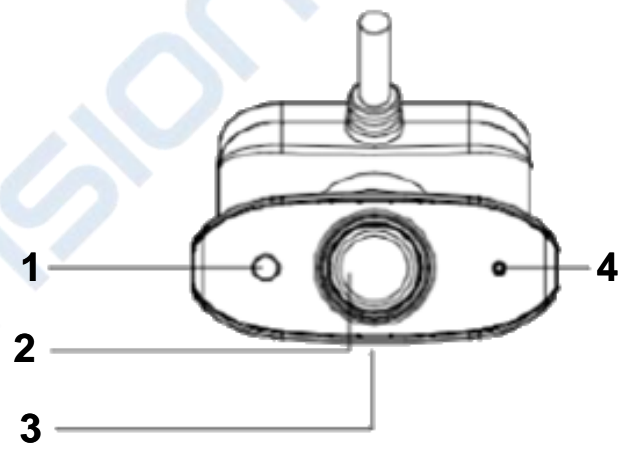
ISSUED

Page	VT3000 - DASH CAMERA	Rev.	AK
4 / 10	S-VT5500-G/VT3000 ANTE NNA	Document	AK
		VT3000270420	Designer
Scale	N/A	www.VisionTrack.com	

1 2 3 4 5 6 7

1 2 3 4 5 6 7

A
B
C
D
E
F
G
H



#	DESCRIPTION
1	Photosensitive Area
2	Lens (Internal Facing)
3	Camera Fixing Screw
4	Microphone

VISIONTRACK
 High Rooms Industrial Estate
 Tunbridge Wells
 TN23 5EF

27/04/2020
 05/05/2020

DRAWN
 ISSUED

Page	VT3000 - DASH CAMERA	Rev.	AK
5 / 10	OPT VT-C26-IPC	Document	AK
		VT3000270420	Designer
			Scale
			N/A
			www.VisionTrack.com

1 2 3 4 5 6 7

1 2 3 4 5 6 7

A
B
C
D
E
F
G
H

PENDING

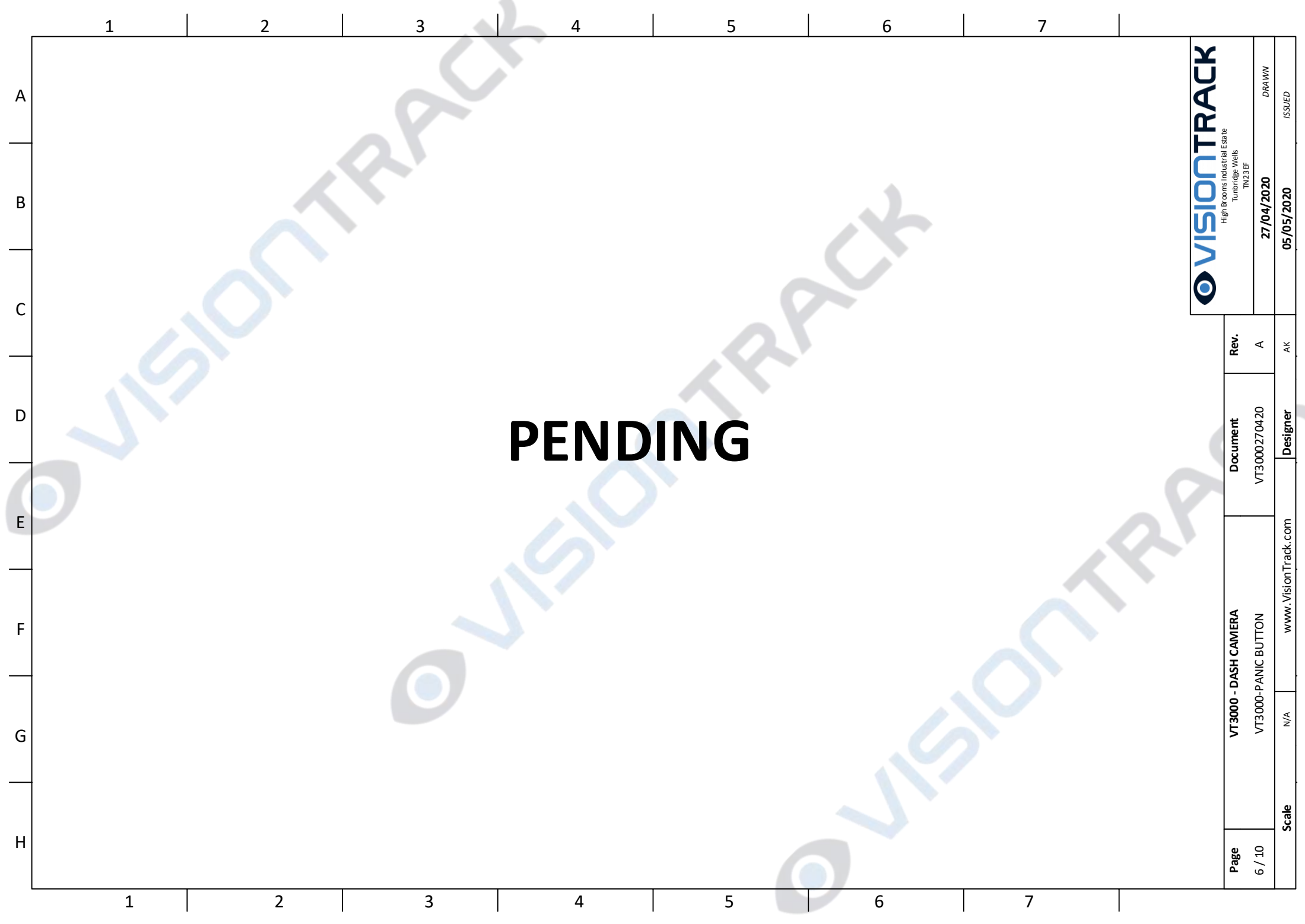


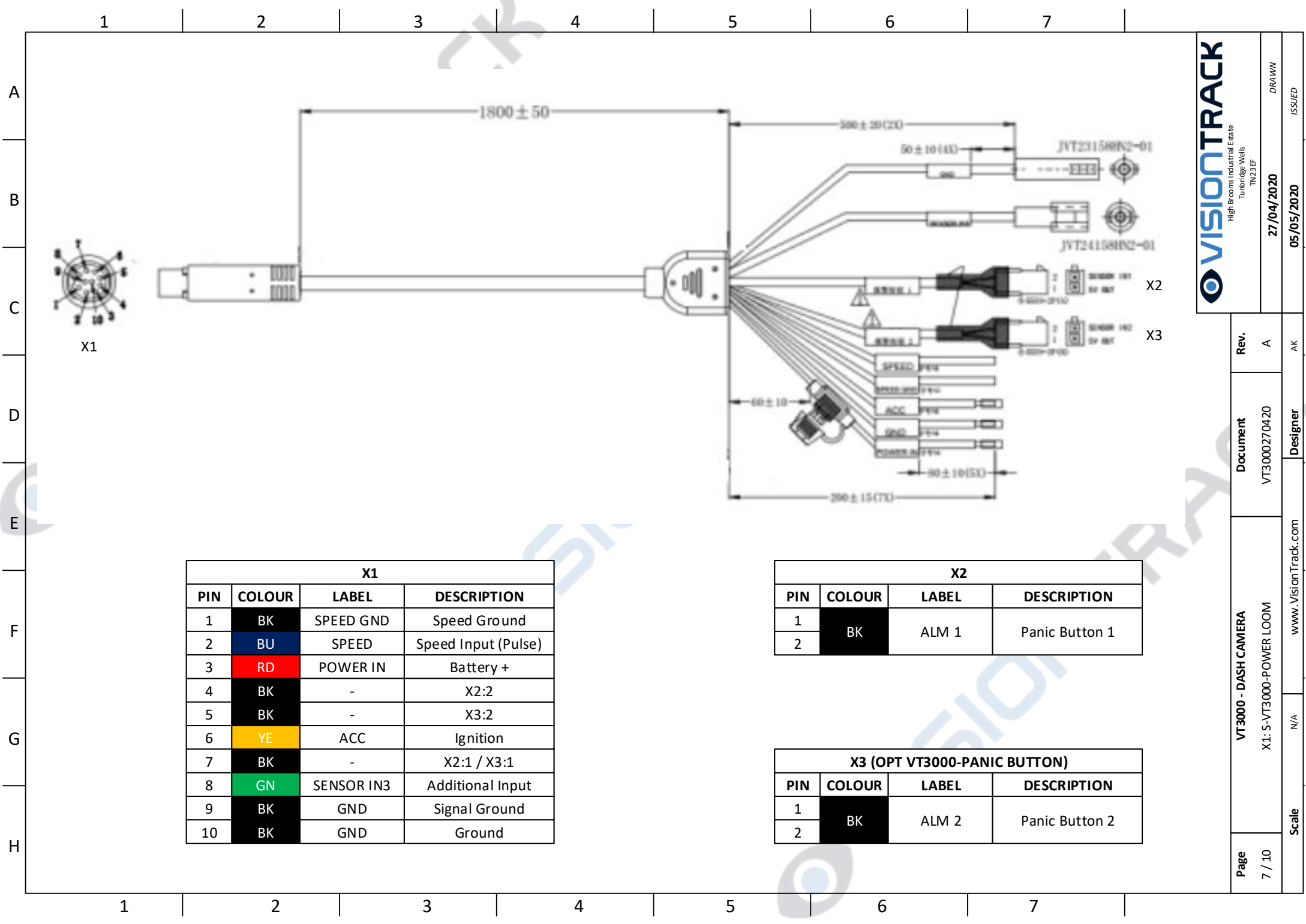
High Rooms Industrial Estate
Tunbridge Wells
TN23EF

27/04/2020
05/05/2020

DRAWN
ISSUED

Page 6 / 10	VT3000 - DASH CAMERA VT3000-PANIC BUTTON	Document VT3000270420	Rev. A
Scale N/A	Designer www.VisionTrack.com	AK	

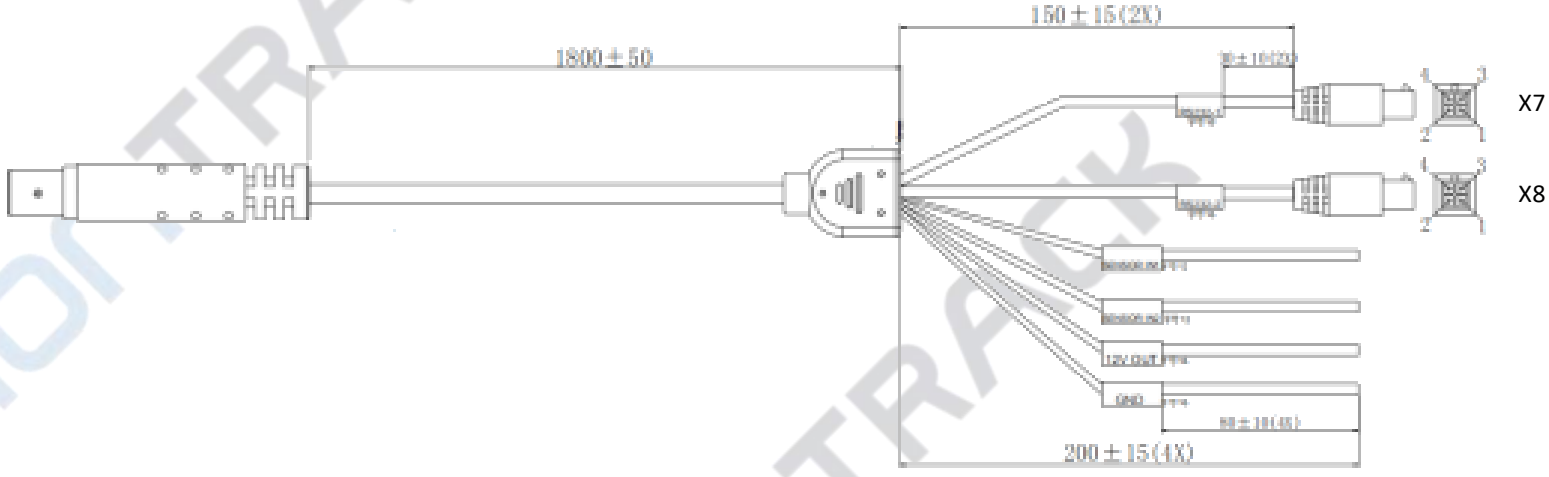
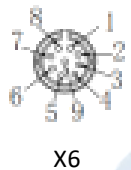




X1			
PIN	COLOUR	LABEL	DESCRIPTION
1	BK	SPEED GND	Speed Ground
2	BU	SPEED	Speed Input (Pulse)
3	RD	POWER IN	Battery +
4	BK	-	X2:2
5	BK	-	X3:2
6	YE	ACC	Ignition
7	BK	-	X2:1 / X3:1
8	GN	SENSOR IN3	Additional Input
9	BK	GND	Signal Ground
10	BK	GND	Ground

X2			
PIN	COLOUR	LABEL	DESCRIPTION
1	BK	ALM 1	Panic Button 1
2	BK	ALM 1	Panic Button 1

X3 (OPT VT3000-PANIC BUTTON)			
PIN	COLOUR	LABEL	DESCRIPTION
1	BK	ALM 2	Panic Button 2
2	BK	ALM 2	Panic Button 2



X6 (OPT VT3000-GPIO)		
PIN	LABEL	DESCRIPTION
1	SENSOR IN1	Additional Input
2	-	X7:3
3	-	X7:2
4	SENSOR IN2	Additional Input
5	-	X8:2
6	-	X8:3
7	-	X7:1 / X8:1
8	12V OUT	12v Output
9	GND	Ground

X7		
PIN	LABEL	DESCRIPTION
1	RS232-1	+5v
2		TX
3		RX
4		Ground

X8		
PIN	LABEL	DESCRIPTION
1	RS232-2	+5v
2		TX
3		RX
4		Ground

VISIONTRACK
 High Precision Industrial Estate
 Tunbridge Wells
 TN23EF

Rev. **A**
 Document **VT3000270420**
 Scale **N/A**

27/04/2020
 05/05/2020

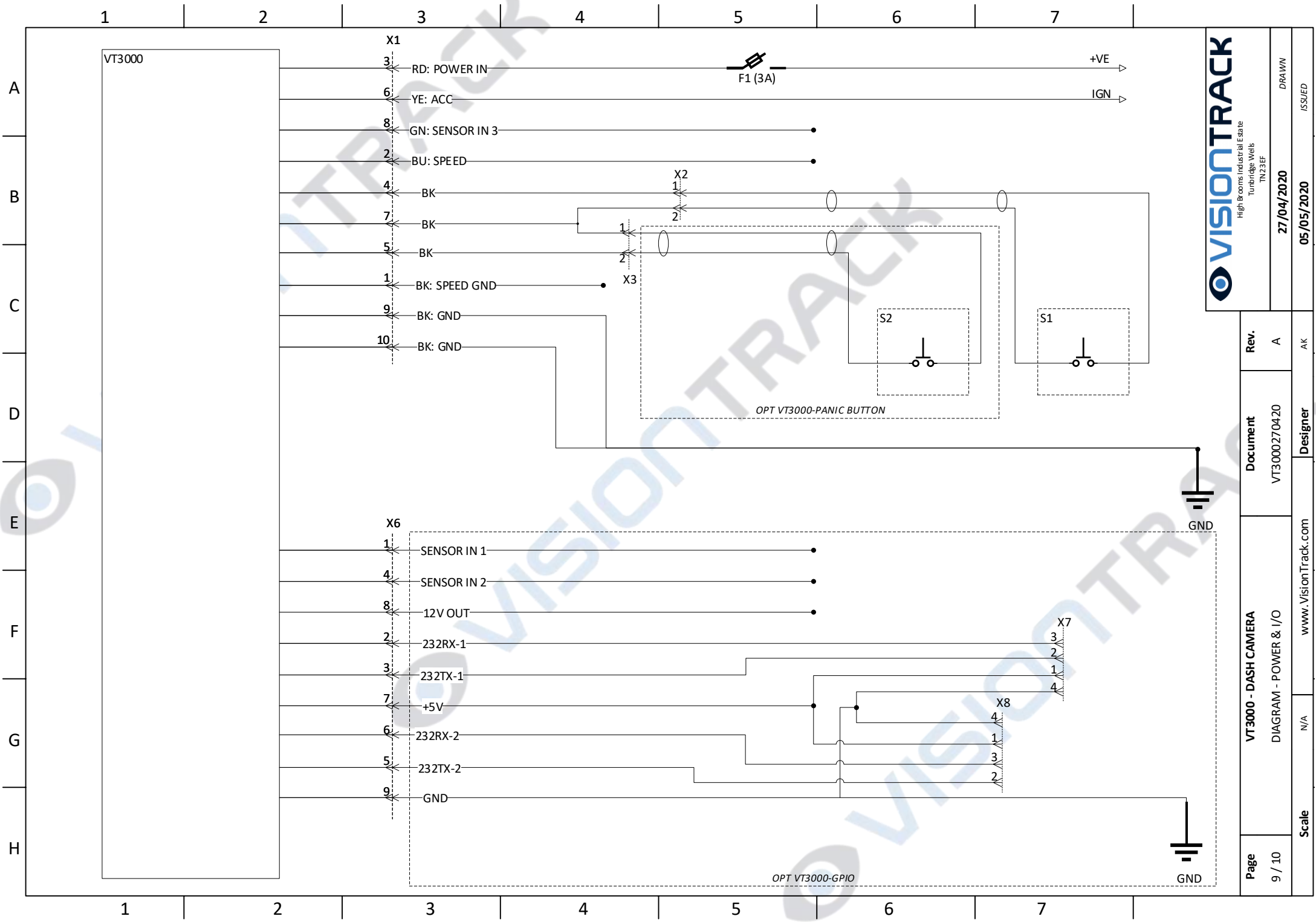
DRAWN
 ISSUED

Rev. **A**
 Document **VT3000270420**
 Designer **AK**

VT3000 - DASH CAMERA
 OPT X6: VT3000-GPIO

www.VisionTrack.com

Page **8 / 10**



VISIONTRACK
 High Rooms Industrial Estate
 Tunbridge Wells
 TN23EF

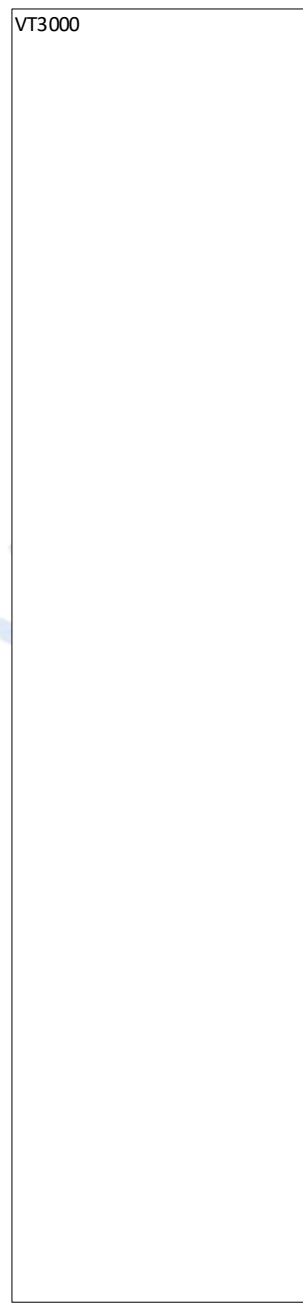
27/04/2020
 05/05/2020

DRAWN
 ISSUED

Rev.	A	AK
Document	VT3000270420	Designer
VT3000 - DASH CAMERA	DIAGRAM - POWER & I/O	N/A
Page	9 / 10	Scale
www.VisionTrack.com		

1 2 3 4 5 6 7

A
B
C
D
E
F
G
H



X4
1
2
3
4

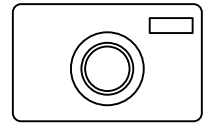
RXD
GND
TXD
VCC

ANT1



X5
1
2
3
4
5

IPC2



OPT VT-C26-IPC

1 2 3 4 5 6 7

High Brooms Industrial Estate
Tunbridge Wells
TN23EF

27/04/2020
05/05/2020

DRAWN
ISSUED

Page 10 / 10	VT3000 - DASH CAMERA DIAGRAM - POSITION & AV	Document VT3000270420	Rev. A	Scale N/A	Designer www.VisionTrack.com	AK
-----------------	---	--------------------------	-----------	--------------	---------------------------------	----