

VISIONTRACK



SD VIEWER USER MANUAL

(Only for VT1000/VT2000/VT2.2 and VT4000)

THE UK'S MOST AWARD-WINNING CAMERA TELEMATICS COMPANY



www.visiontrack.com

Contents

PC Requirements	3
Software Installation	4
Software Settings	5
Opening SD Card	6
Open Files	7
Playback	8
Drive Data	9
Tracking Map	10
Event Search	11
Privacy Settings	12
Save JPEG and AVI file	13
Print Image	14
Backup Files	15
Backup Data List and Export	16

PC Requirements:



PC SYSTEM REQUIREMENTS

Recommended PC specifications for PC Viewer Software

OS	Windows Vista, Windows 7, Windows 8/8.1, Windows 10
CPU	Core 2 Duo 2.5GHz or Higher
RAM	2GB or Higher
Interface	SD Memory Card Reader
HDD	Install: 55MB or Higher
Free Space	Backup: 4GB or Higher
Display	1024 x 768 pixel/True Color or Higher

If the PC does not meet the minimum system requirement, the PC Viewer Software may not function properly.

NOTE: MAC OS is not supported

Software Settings:

Viewing Setting

Settings

Login Password

Password (1000-9999)

Viewer Settings

Language

Speed Format

Speed Type(Play Info Bar)

Time Format

Date Format

Deinterlace

Display Time

Tamper Detection

Drive Data Settings

Max Speed

Max G-Sensor

Max RPM

Click the 'Set Password' button. Password for the SD Viewer Software can be set with any number between 1000-9999. The 'speed' & 'date' formats will be set automatically according to the PC Windows setting. However it can be changed with this software setting menu.

Last Layout: The program will launch with the same layout as it was when it was closed.

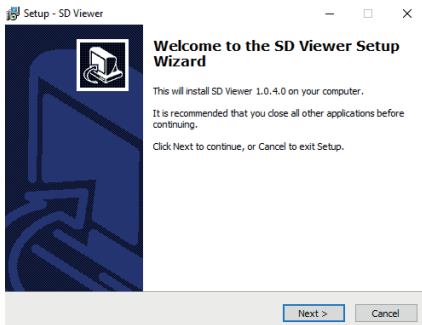
Default Layout: The program will launch with the Default Layout

Drive Data Settings: The graph scales for the Drive Data Window will be modified according to the Settings.

Software Installation:

The SD viewer software is on the support site only. Always make sure you have the latest version. <https://support.visiontrack.com/a/solutions/articles/76000012454>

- 1) Download the software from the support site.
- 2) Open the software link and go through the installation process.



- 3) Once complete you will have the desktop icon as shown below.



NOTE: To Un-install the SD Viewer Software

Make sure the program is not running and open the 'Control Panel' Select 'Remove Program' and remove the SD Viewer Software.

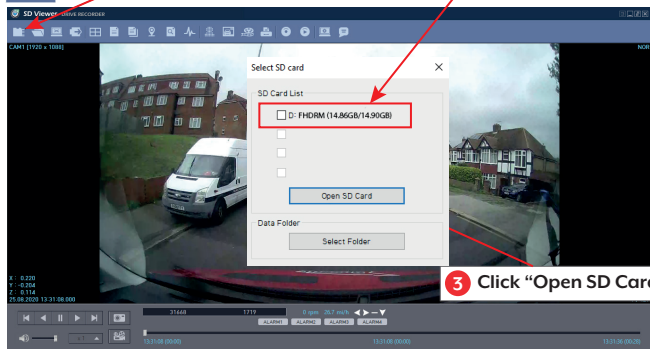
Open the SD Card:

Insert the SD card into your PC



1 Click “Select SD Card” icon

2 Select the SD card drive and click “OK”



3 Click “Open SD Card”

The playback file list and “Continuous” and “Event” tap is displayed on the right side of the screen.

You can hide the playback list by clicking the close icon.

The playback list can be displayed on the screen again by clicking the “File List” icon.



“Select SD Card” icon

You can end the video playback by clicking the “Close files” icon.




“Close files” icon

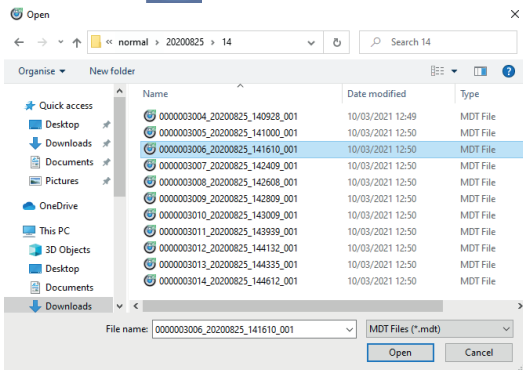
Continuous Play next file.

Check events from playback file.

Continuous	Event
247	11.13.2015 06:10:00
248	11.13.2015 06:20:00
249	11.13.2015 06:30:00
250	11.13.2015 06:40:00
251	11.13.2015 06:50:00
252	11.13.2015 07:00:00
253	11.13.2015 07:10:00
254	11.13.2015 07:20:00
255	11.13.2015 07:30:00
256	11.13.2015 07:40:00
257	11.13.2015 07:50:00
258	11.13.2015 08:00:00
259	11.13.2015 08:10:00
260	11.13.2015 08:20:00
261	11.13.2015 08:30:00
262	11.13.2015 08:40:00

Open Files:


If you want to play a specific file that has been backed up on the PC or SD Card, Click the “Open files” icon 



Select the MDT file you want to play and click “Open”.

The image of the selected file will then be displayed and you can click the “Play” button to play the file.

“Eject SD Card” icon 

When finished, click “Eject SD Card” icon and remove the SD card from your PC. Or please use  “Safely Remove Hardware and Eject Media” button in your PC.

Playback:

Record Mode

Camera Title - Resolution

GPS Speed
Display Frame / Total frames Number

Vehicle ID, Driver ID

Previous Image
Reverse
Pause
Play
Next Image

Volume

Playback Speed Control

Record Video

Signal/Alarm Indicator

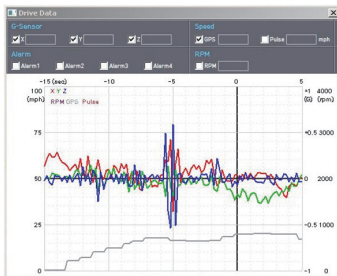
Left, Right, Brake, Reverse

Drive Data:



“Drive Data” icon

The default setting only displays the G-sensor graphs but other information may be added by checking the boxes in the upper part of the screen.



G-Sensor: (X axis: red, Y axis: green, Z axis: blue, based on the positioning of the main unit) is shown with the data reference point zero-point calibrated and positive shocks as (+) and negative shocks as (-).

G sensor X value: Front & Back (like Quick brake or Quick Start)

G sensor Y value: Left & Right (like Quick Turn)

G sensor Z value: Up & Down (like prominence and depression)

Speed: GPS measured speed is displayed in grey.

The speed-pulse measured speed is not support.

RPM: The RPM is not support.

ALARM: The alarms are displayed on the bottom of the screen with the grey bar meaning the trigger is activated.

Tracking Map:



“Tracking Map” icon

The route taken will be displayed on the Google map.



The blue markings show the route taken.

To see the route and position on the Google map, the GPS data should be recorded with video.

*To see the map, the PC should be connected to the internet.

Privacy Settings:



“Privacy Settings” icon

Set the mosaic area on the video for privacy protection.



When backing up the data as a JPG or AVI format and playing in the Viewer software, you are able to make a mosaic processing on the area you have set.

To do this, put the pause the video and click the ‘Privacy settings’ button. The privacy setting screen will pop up.

Blur out the area you wish to protect by left-clicking on the sections.

You can select multiple areas.

You can also unselect, selected areas by right-clicking the blurred areas.

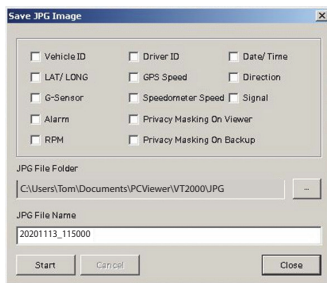
To select all or clear all, click on the ‘Select all’ or ‘UnSelect All’ buttons on the bottom, respectively.

Save JPEG and AVI file:

Pause the playback and click “Save JPG” icon to make JPG images.



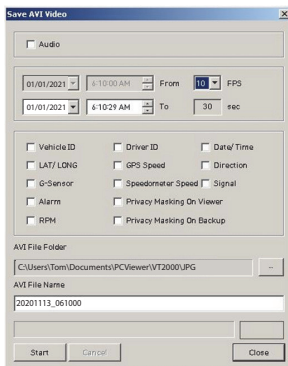
“Save JPG” icon



Pause the playback and click “Save AVI” icon to make an AVI file.



“Save AVI” icon

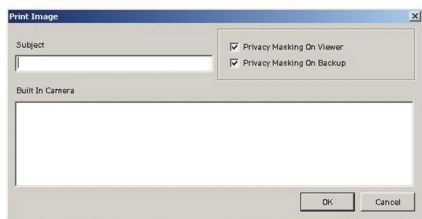


Print Image:

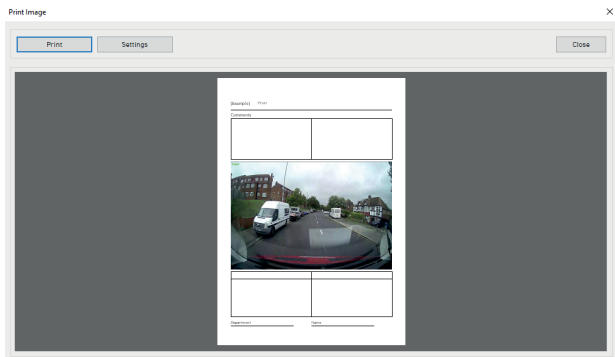
Pause the playback and click “Print Image” icon.



“Print Image” icon



Type Subject and Memo



Alter the printer settings to change paper size/orientation etc.

Backing Up Files:

Back up the recorded data on your PC.

There is an option to store data by type to easy management of data.



“Backup Data” icon

The screenshot shows a dialog box titled "Backup Data" with the following fields and controls:

- From:** Date: 01/01/2021, Time: 6:10:00 AM
- To:** Date: 01/01/2021, Time: 6:10:59 AM, Duration: 60 sec
- Vehicle ID:** VT2000TEST
- Driver ID:** Tom
- Memo Title:** (empty text box)
- Memo:** (empty text area)
- Folder:** C:\Users\Tom\Documents\PCViewer\
- Type:** (empty dropdown menu)
- Buttons:** Start, Cancel, Close

The start time is when the video was paused and cannot be changed once you start this process.

Set the time you wish to backup and input Title and Memo.

And input Type and then click [Start].

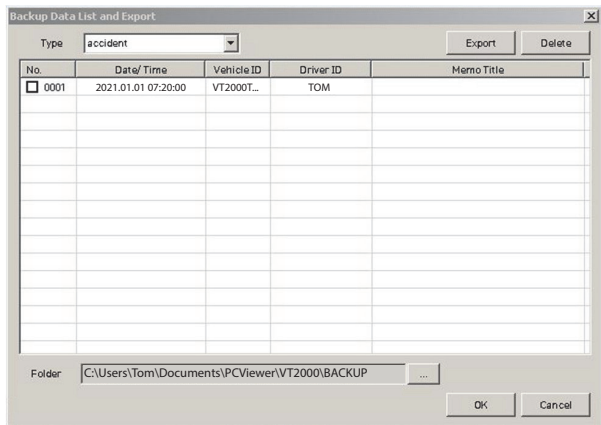
The maximum amount of time you can back up is one hour.

Backup Data List and Export:

You can use the data backup list to play data files easier that have been backed up.



“Backup Data List and Export” icon



Choose the folder where the backup files are at the bottom of the screen.

(It will automatically show the last folder that was accessed.)

Then, select the type by scrolling down the options.

The files are listed showing the “Date/Time, Vehicle ID, Driver ID, Memo Title”.

Check the box next to the file you wish to play back and click ‘OK’.



www.visiontrack.com

SD VIEWER USER MANUAL



2 Chapman Way
High Brooms Industrial Estate
Tunbridge Wells
Kent
TN2 3EF



VisionTrack Official Website